



Health... at the heart of life in Blackpool

NHS

Blackpool

Clinical Commissioning Group

Appendix 9a

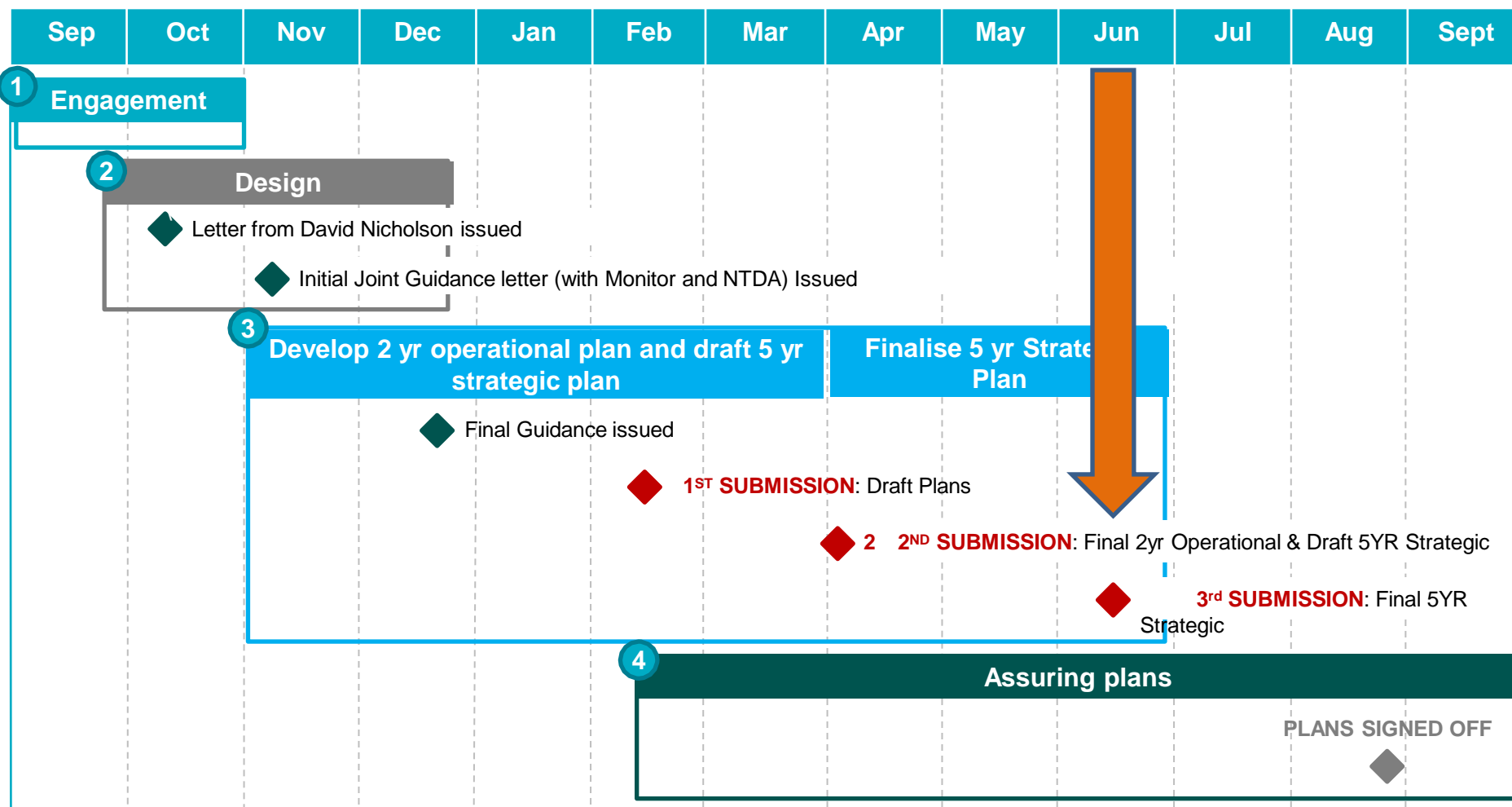
NHS Blackpool CCG

Strategic Plan

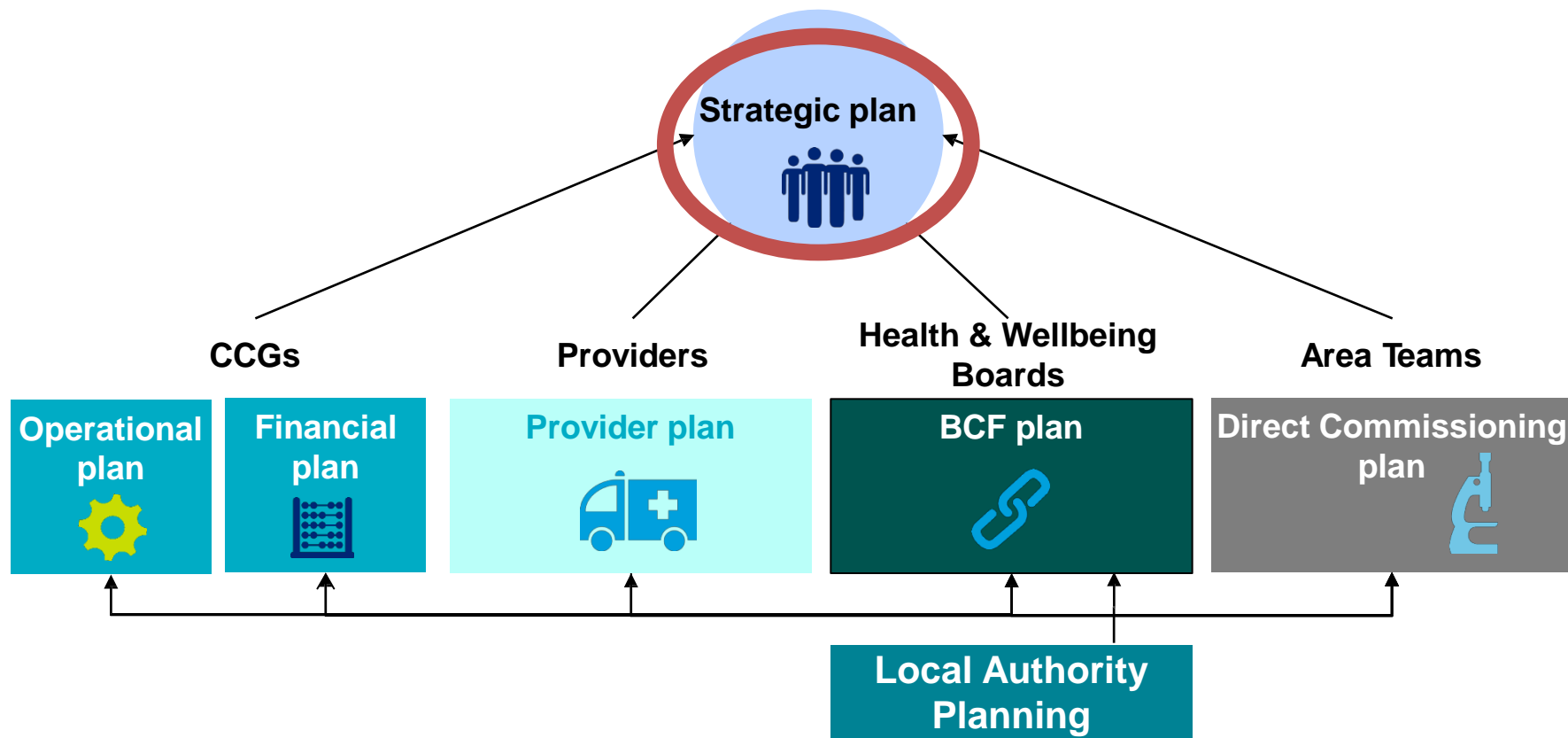
2014-19



What is the Planning Timeline?



The Plans



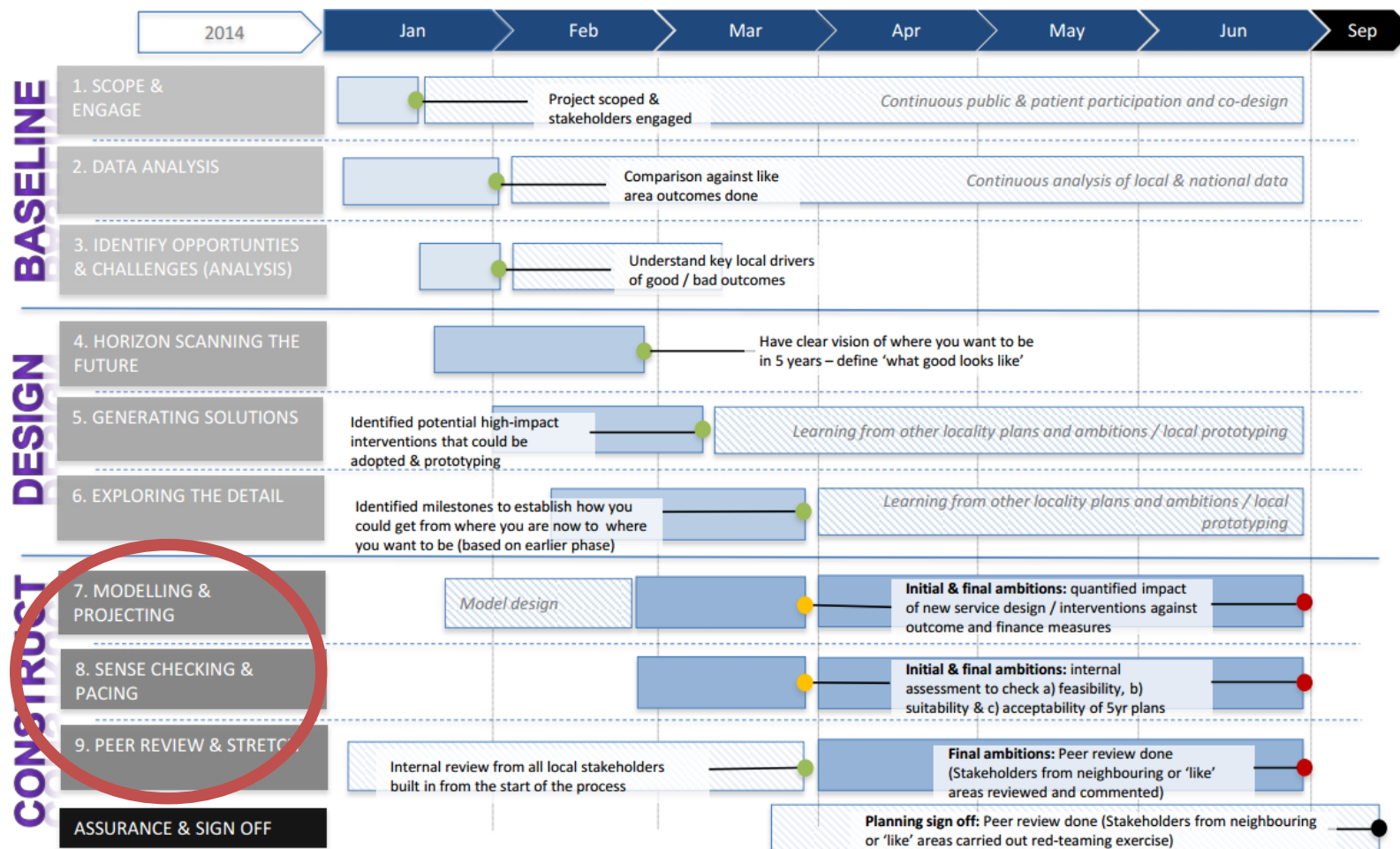
The Strategic plan will be owned and signed up to by whole health economy. It includes:

- 'Plan on a page'
- Signposted key lines of enquiry return
- Improvement against the 7 outcomes

5 Year Strategic Plan - Where are we?

Framework: Timeline

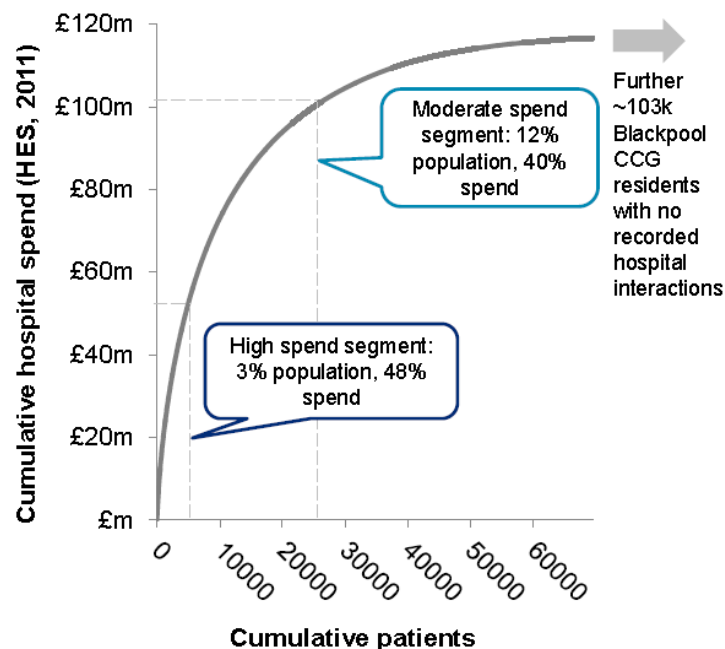
Given the tight timescales, during our workshops participants identified a number of key deliverables over the next 9 months. These are set out below as a suggested project plan / high level milestone chart which local areas could use to plan their work to develop plans and ambitions for improving outcomes.



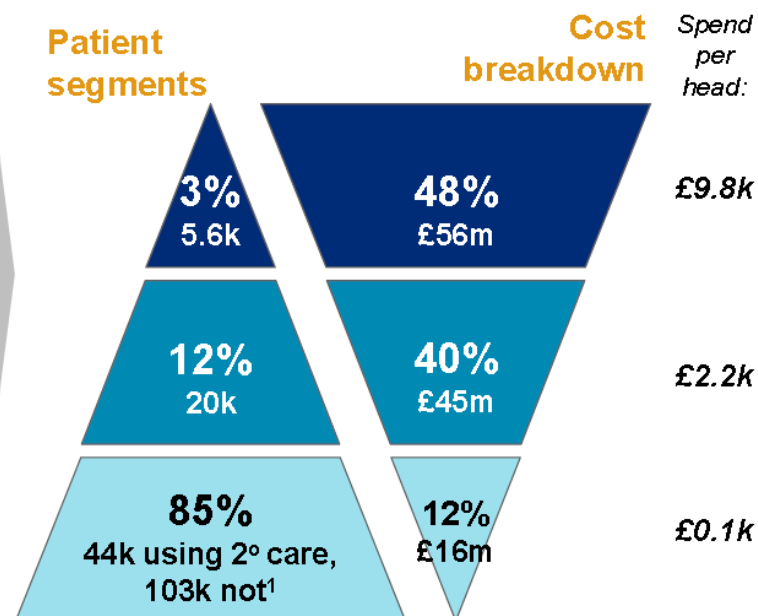
How Oliver Wyman cut the data

Secondary care spend segmentation for Blackpool CCG residents

Cumulative hospital income
Blackpool CCG residents, HES 2011 income



Patient segmentation by hospital spend
Blackpool CCG residents only



How Right Care cut it

Headlines for your health economy

Analysis

Value Opportunities

Quality & Outcomes

Circulation Problems (CVD)
Cancer & Tumours
Mental Health Problems
Respiratory System Problems
Gastrointestinal

NHS Blackpool CCG

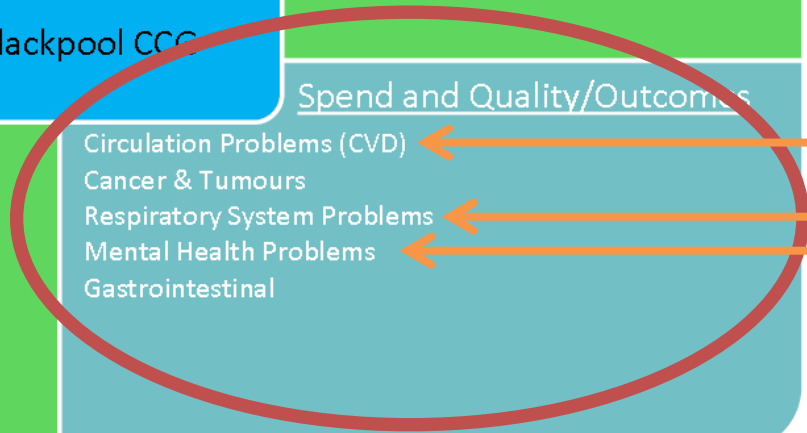
Acute and prescribing spend

Circulation Problems (CVD)
Cancer & Tumours
Neurological System Problems
Respiratory System Problems
Genitourinary

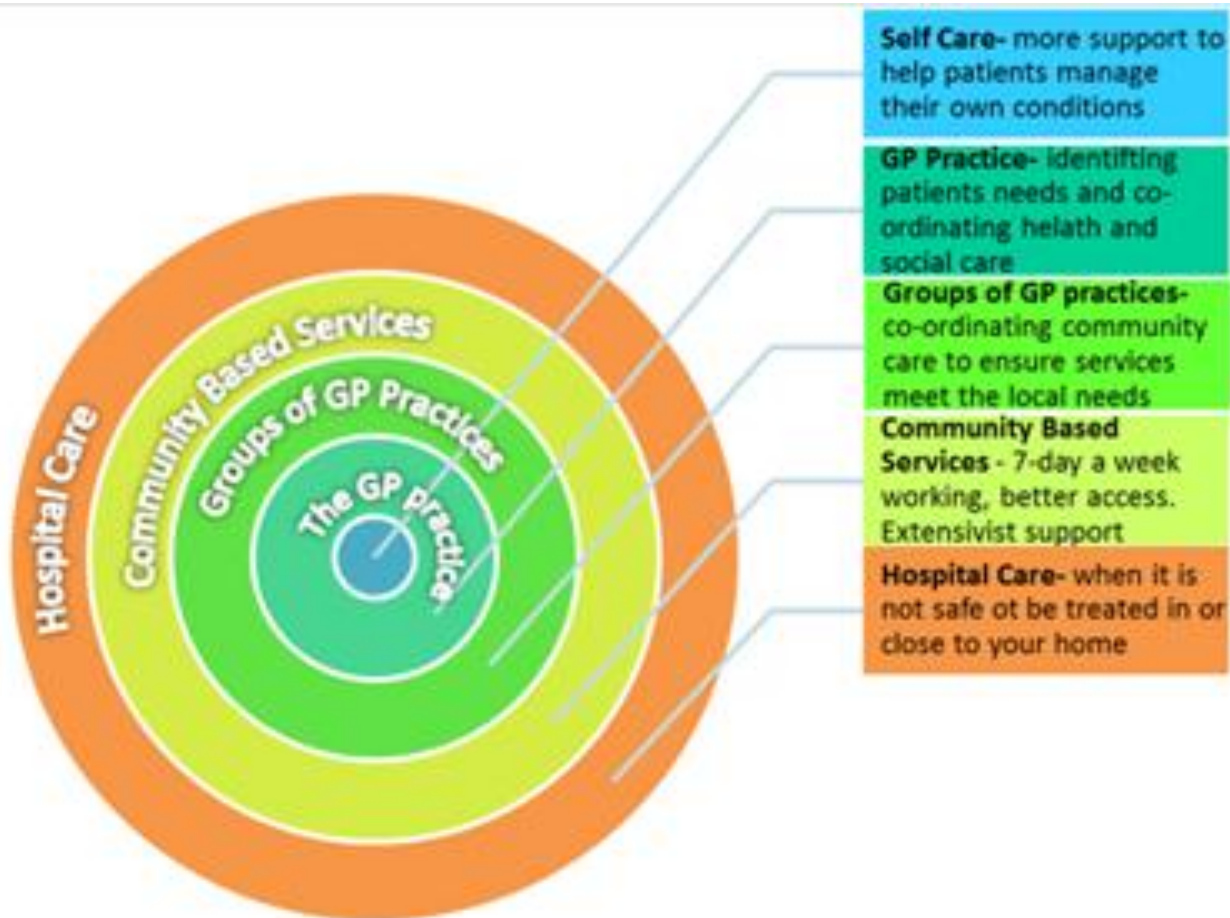
Spend and Quality/Outcomes

Circulation Problems (CVD)
Cancer & Tumours
Respiratory System Problems
Mental Health Problems
Gastrointestinal

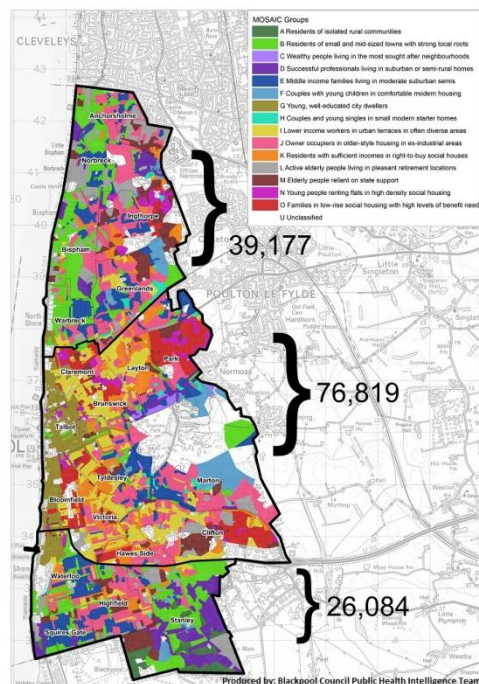
1
2
3



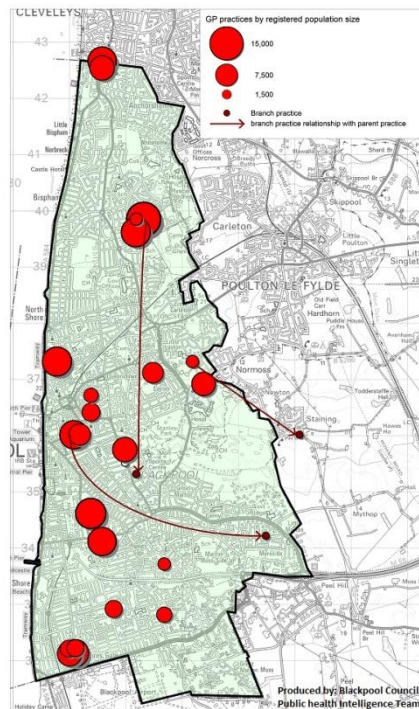
New Model



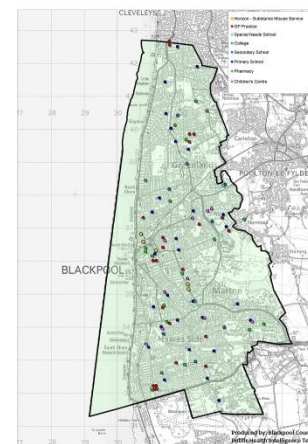
Clinical Engagement- Mapping practices and resources



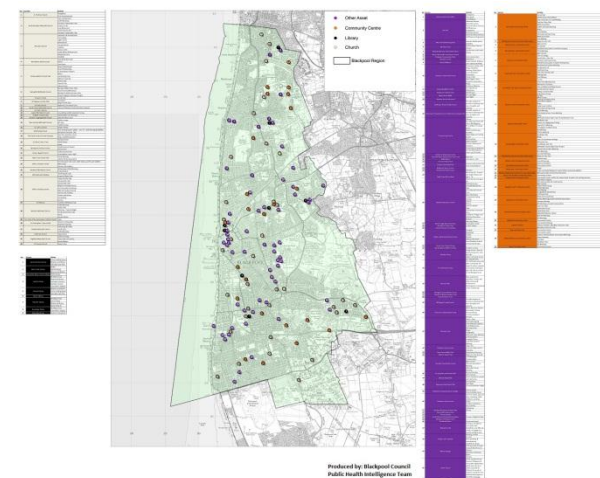
Mosaic Groups of population



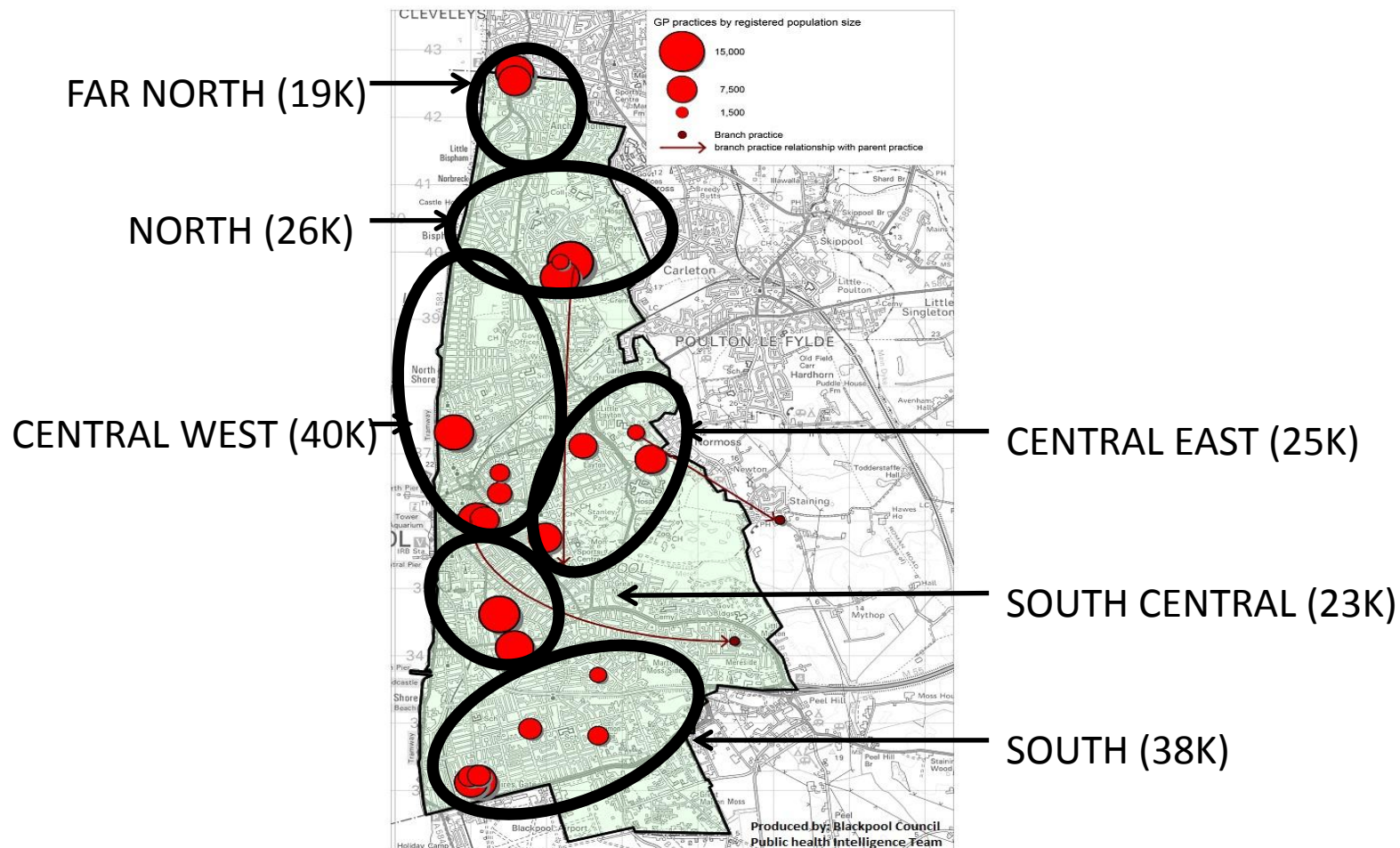
Practice location and size



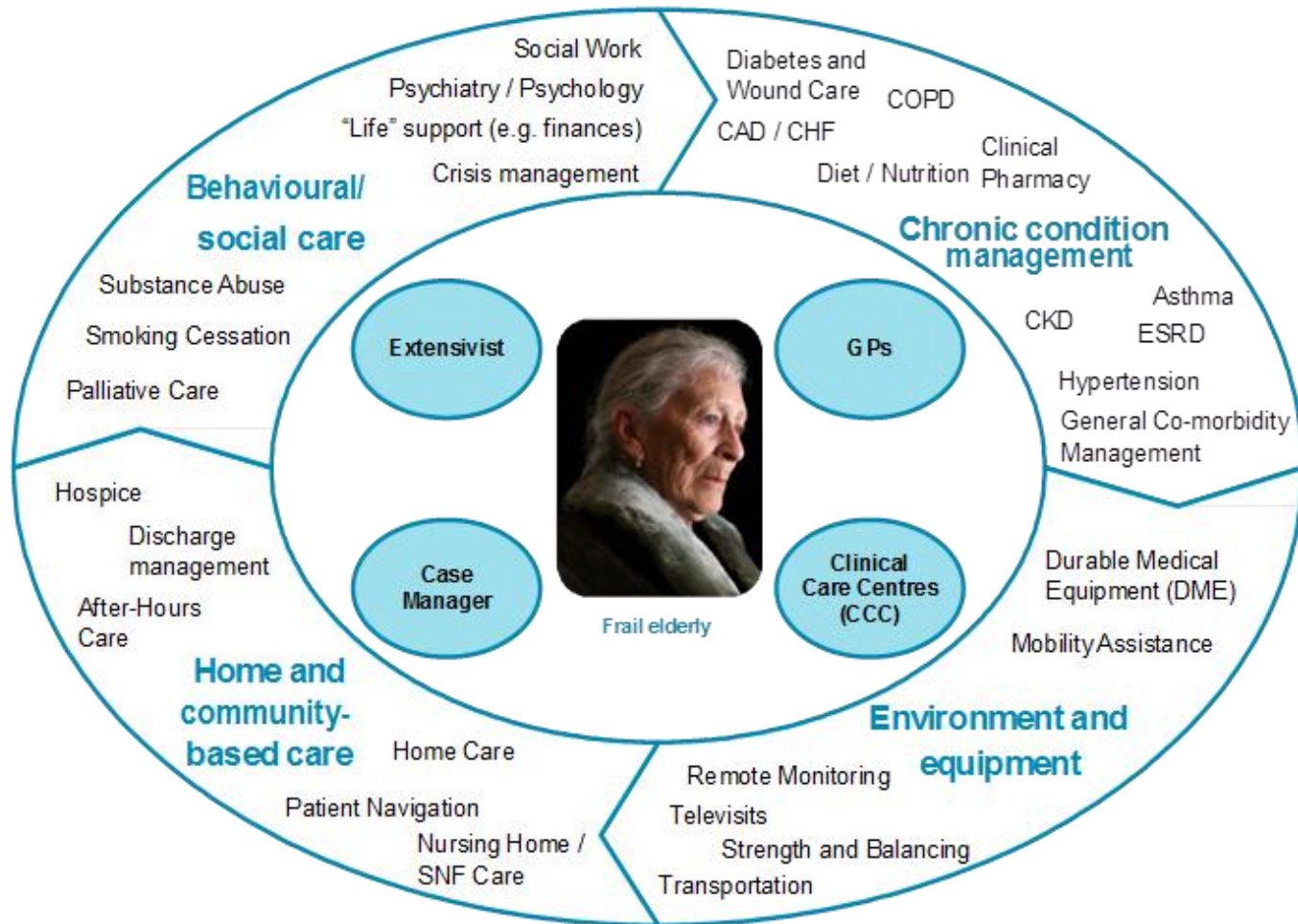
Existing services



Libraries, churches etc.



Extensivist



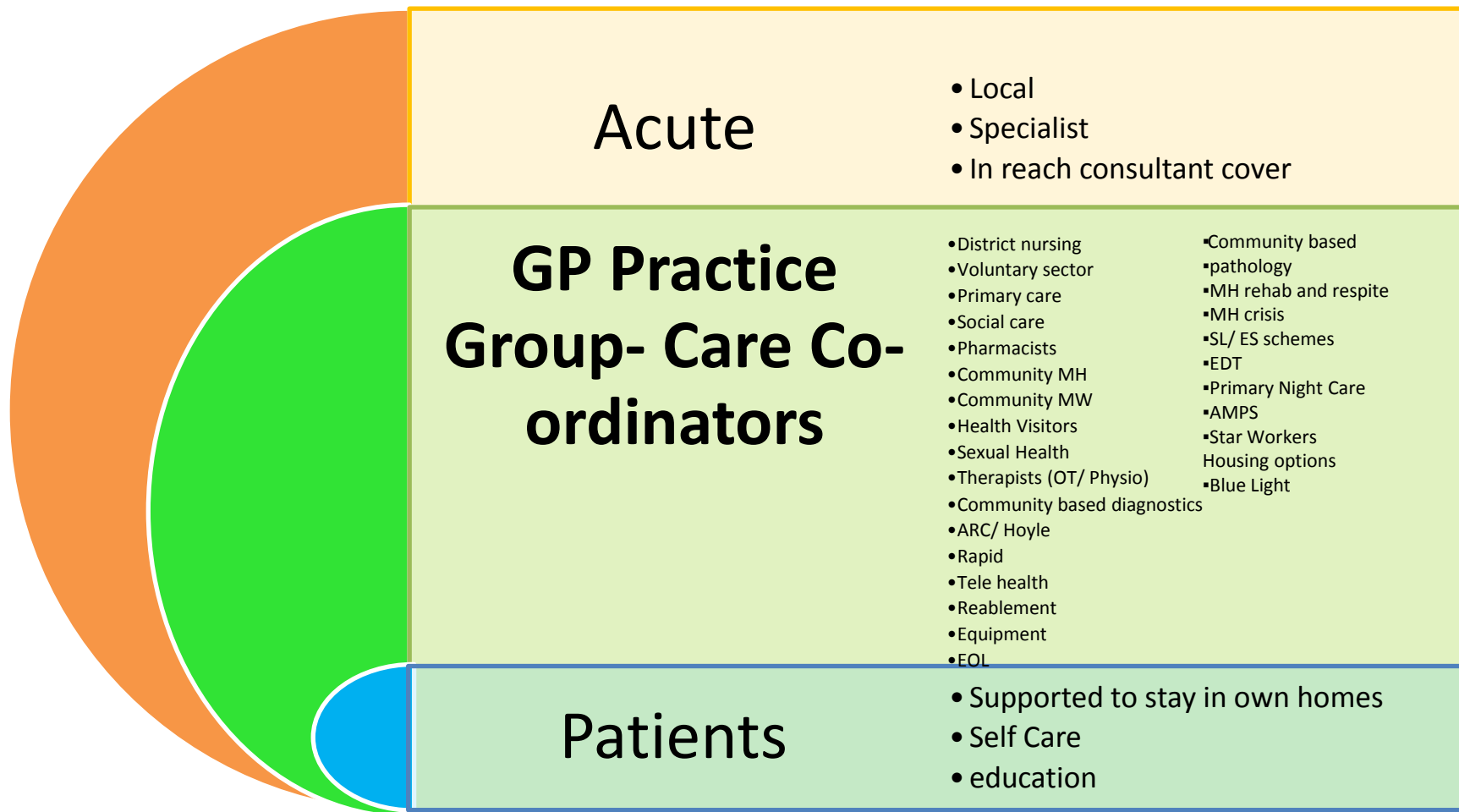
Extensivist

- Focused on the sickest of the sick patients, who are typically at the top of the pyramid and have a wide range of healthcare needs
- Fundamentally different way of delivering care, around the needs of the patient cutting across all aspects of health and social need: medical, social, psychological, functional and pharmaceutical

Impact

1. more effective condition management
2. patient satisfaction improves
3. by breaking the cycle of reactive interventions, hospital admissions are reduced by ~25% and outpatient and A&E attendances decline by ~20%.
4. When hospital admission is necessary the length of stay can be reduced by the availability of rehab care outside hospital managed by the Extensivist

Enhanced Primary Care

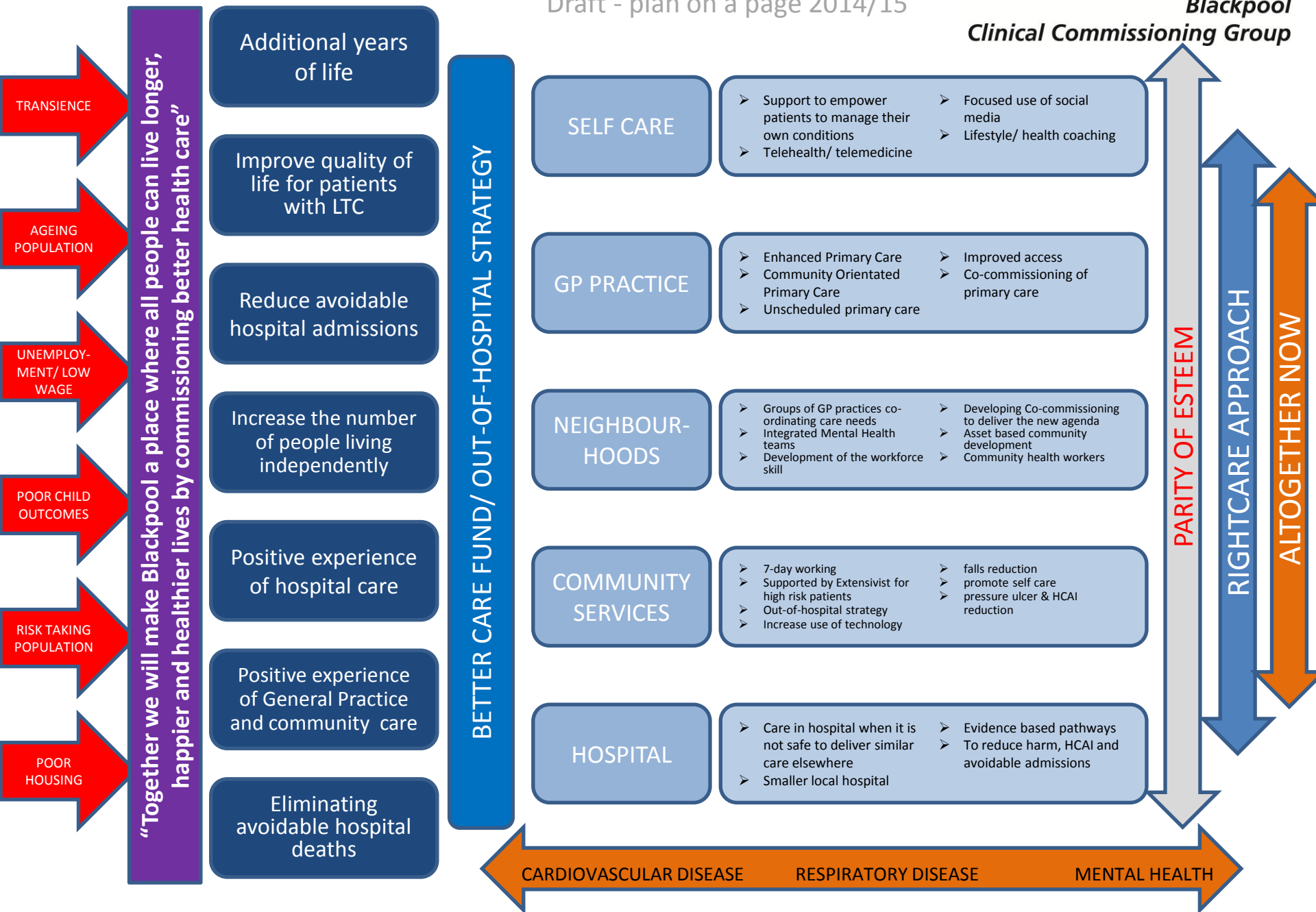


Sections of the plan

Contents

Introduction	3
Executive Summary	4
Part 1 – The Story of Blackpool	7
Part 2 Foundations for Delivery	15
Part 3 System Vision for Commissioned Services	25
Part 4 Finance and Activity	43
Part 5 Engagement and Partnership	45
Part 6 Outcomes	49
Part 7 Risks	54
Part 8 Governance and Delivery Systems	56
Appendices	64

Draft - plan on a page 2014/15



Questions

